

House and Land Package



vivente

HAMMOND PARK



My Monte Carlo

BED

3

BATH

2

CAR

2

\$509,170



my homes wa

Lot 69 Corsia Crescent, Hammond Park

Land Size 394 sqm

House Size 212.39 sqm

Frontage 12.5 m

Orientation West

Your House Specialist

Stephen Moore

0408 808 833

smoore@myhomeswa.com.au

Specification Highlights

- Construction Timeframe Guarantee*
- Ducted reverse cycle airconditioning
- Stone benchtop to kitchen
- Stainless Steel Dishwasher
- 10 LED lights to living, kitchen and meals
- High 31c ceilings in kitchen, family and living areas
- Price includes BONUS boundary fencing
- Plus a FREE front yard landscaping package

See page 2 for the plan

RICHARD NOBLE

PROPERTY INTEGRITY COMMUNITY

Call us on 0407 945 834

viventeliving.com.au

House and Land Package

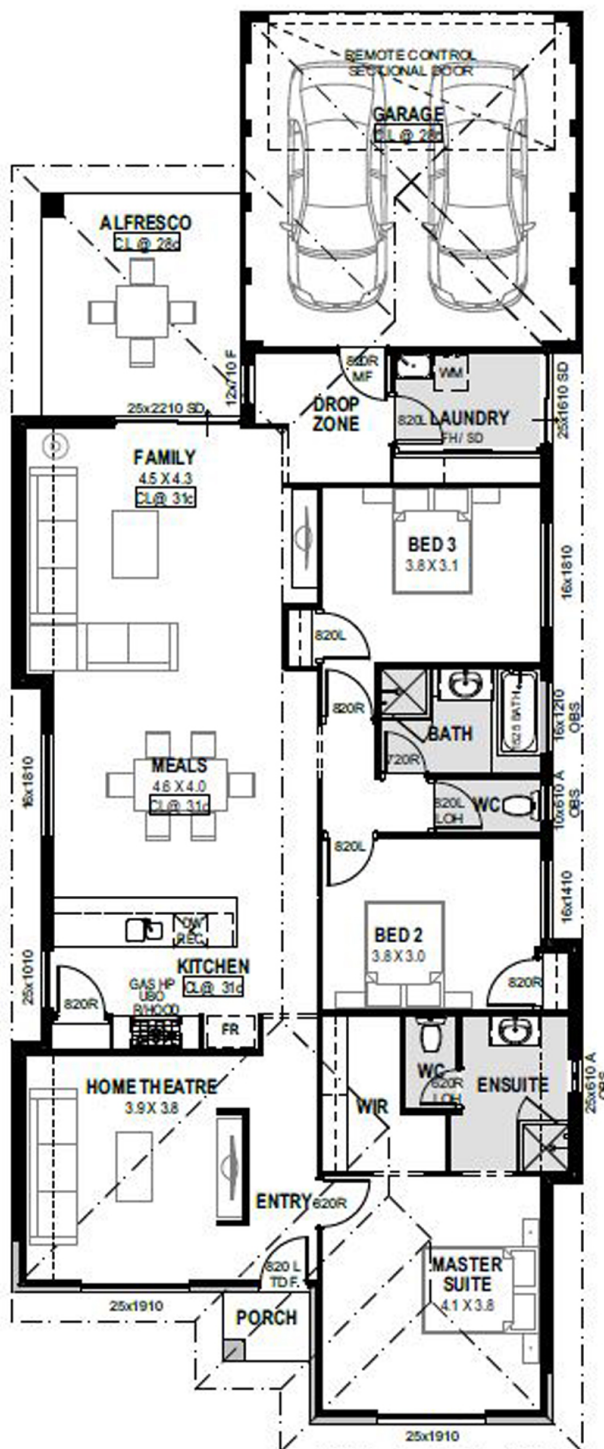


vivente

HAMMOND PARK

My Monte Carlo

BED 3 BATH 2 CAR 2



RICHARD NOBLE

PROPERTY INTEGRITY COMMUNITY

Call us on 0407 945 834

vivente.com.au

Disclaimer: The details contained in this house and land package were correct at the time of listing however pricing and land availability is subject to change. All care has been taken to ensure the home design shown is suitable for the advertised lot however design and specification is subject to shire approvals. Photographs, plans and the building component are supplied by the builder and Richard Noble & Company are not responsible for any changes or omissions supplied by the builder. A separate building contract will be entered into with the participating builder. Changes made to the house design will affect the total cost of the package - unless a provisional sum for site works is detailed it is assumed that site works are not included in the package. Site work allowances, where specified, are subject to a licensed survey and engineer reports.