

House and Land Package



vivente
HAMMOND PARK



The Madeleine

BED

3

BATH

2

CAR

2

\$647,510

Lot 69 Corsia Crescent, Hammond Park

Land Size 394 sqm

House Size 202 sqm

Frontage 12.5 m

Orientation West



Your House Specialist

Jason Willoughby

0435 232 868

jason@baileysliving.com

Specification Highlights

- Essastone Bench Tops.
- 900mm Fisher & Paykel Gas Cooktop and Rangehood.
- 2 x 600mm Fisher & Paykel Wall Ovens.
- 600mm Fisher & Paykel Microwave Oven.
- Built in Fisher & Paykel Coffee Machine.
- Overhead & Underbench Cupboards with Soft Close Draws.
- Price includes BONUS boundary fencing.
- Plus a FREE front yard landscaping package.

See page 2 for the plan

RICHARD NOBLE
PROPERTY INTEGRITY COMMUNITY

Call us on 0407 945 834
viventeliving.com.au

House and Land Package



vivente

HAMMOND PARK

The Madeleine

BED

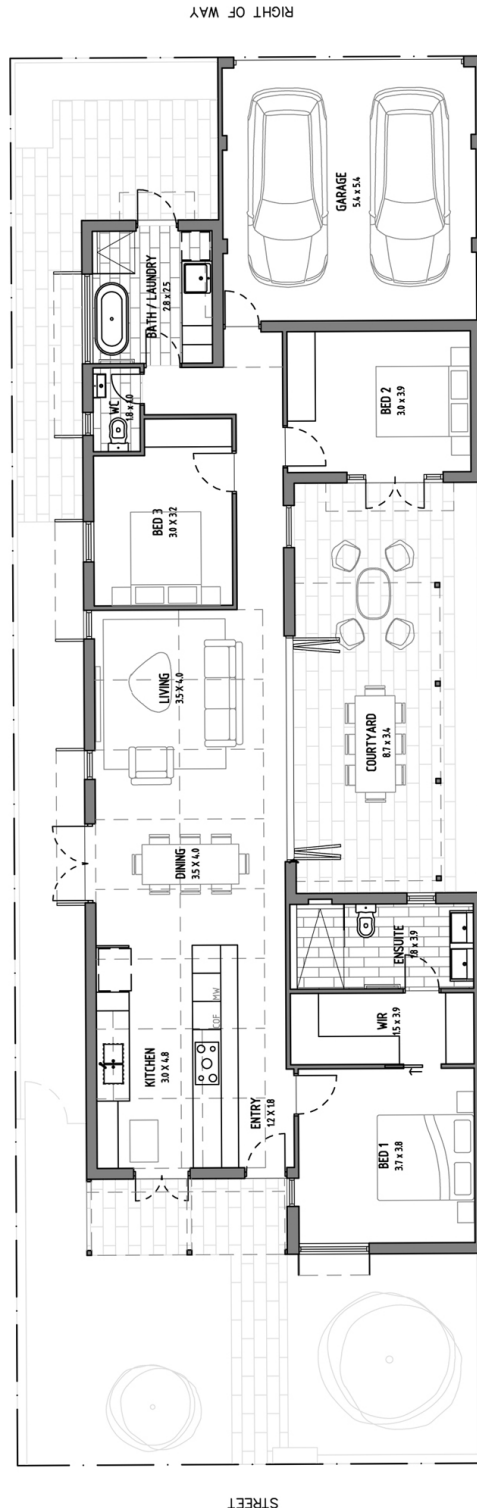
3

BATH

2

CAR

2



RICHARD NOBLE

PROPERTY INTEGRITY COMMUNITY

Call us on 0407 945 834

viventeliving.com.au

Disclaimer: The details contained in this house and land package were correct at the time of listing however pricing and land availability is subject to change. All care has been taken to ensure the home design shown is suitable for the advertised lot however design and specification is subject to shire approvals. Photographs, plans and the building component are supplied by the builder and Richard Noble & Company are not responsible for any changes or omissions supplied by the builder. A separate building contract will be entered into with the participating builder. Changes made to the house design will affect the total cost of the package - unless a provisional sum for site works is detailed it is assumed that site works are not included in the package. Site work allowances, where specified, are subject to a licensed survey and engineer reports.