

House and Land Package



vivente
HAMMOND PARK



The Viewbank

BED **4** BATH **2** CAR **2**

\$535,690

Lot 5 Whadjuk Drive, Hammond Park
Land Size 464 sqm
House Size 233 sqm
Frontage 15 m
Orientation South



Your House Specialist

Robert Hiller
0419 926 803
roberthi@gohomes.com.au

Specification Highlights

- Modern stainless steel Smeg appliances
- 31c ceilings to kitchen, living and dining
- Roller blinds throughout
- Essastone benchtops
- Fujitsu ducted reverse cycle air-conditioning
- Rain shower-head to bathroom and ensuite
- Price includes BONUS boundary fencing
- Plus a FREE front yard landscaping package

See page 2 for the plan

RICHARD NOBLE
PROPERTY INTEGRITY COMMUNITY

Call us on 0407 945 834
viventeliving.com.au

House and Land Package



vivente

HAMMOND PARK

The Viewbank

BED

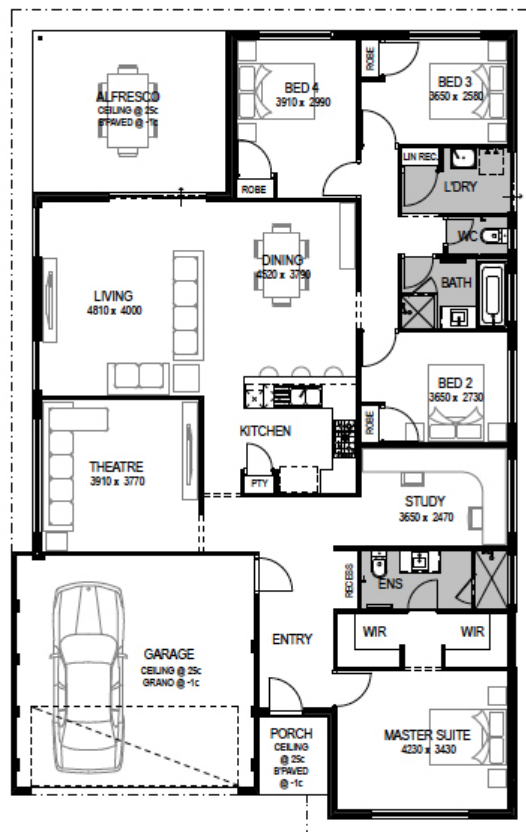
4

BATH

2

CAR

2



RICHARD NOBLE

PROPERTY INTEGRITY COMMUNITY

Call us on 0407 945 834

viventeliving.com.au

Disclaimer: The details contained in this house and land package were correct at the time of listing however pricing and land availability is subject to change. All care has been taken to ensure the home design shown is suitable for the advertised lot however design and specification is subject to shire approvals. Photographs, plans and the building component are supplied by the builder and Richard Noble & Company are not responsible for any changes or omissions supplied by the builder. A separate building contract will be entered into with the participating builder. Changes made to the house design will affect the total cost of the package - unless a provisional sum for site works is detailed it is assumed that site works are not included in the package. Site work allowances, where specified, are subject to a licensed survey and engineer reports.