

House and Land Package



vivente

HAMMOND PARK



Acapulco

BED

4

BATH

2

CAR

2

\$552,835

Lot 35 Corsia Crescent, Hammond Park

Land Size 390 sqm

House Size 252.8 sqm

Frontage 13 m

Orientation South

Price includes provisional site work costs of \$14,645



Your House Specialist

John McKell

0412 330 665

john.mckell@contentliving.com.au

Specification Highlights

- 31c Ceilings throughout whole home
- 1200mm Wide front entry door
- Essastone benchtops throughout
- Westinghouse 900mm appliance set
- Fujitsu revers cycle air-condition
- Quality floorcoverings throughout
- Price includes BONUS boundary fencing
- Plus a FREE front yard landscaping package

See page 2 for the plan

RICHARD NOBLE

PROPERTY INTEGRITY COMMUNITY

Call us on 0407 945 834

viventeliving.com.au

House and Land Package



vivente

HAMMOND PARK

Acapulco

BED

4

BATH

2

CAR

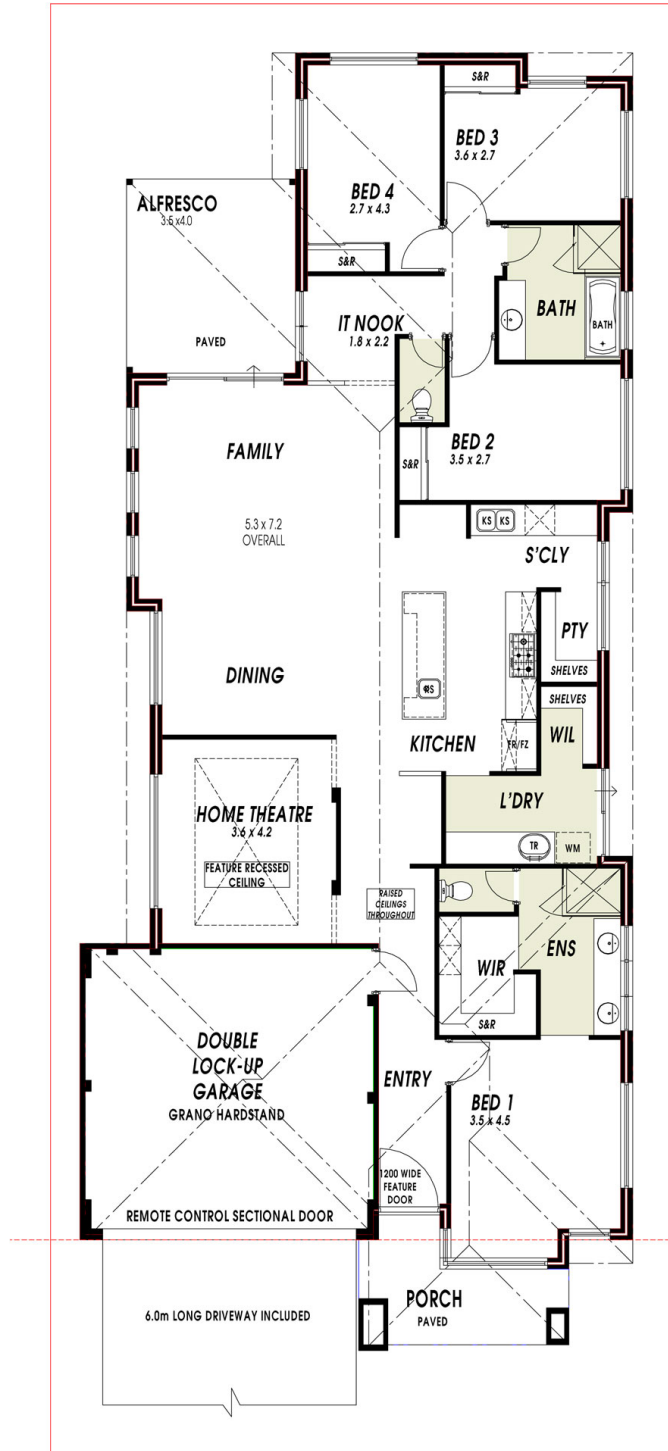
2

Living 194.9 sqm

Alfresco 13.9 sqm

Garage 36.5 sqm

Porch 7.5 sqm



RICHARD NOBLE

PROPERTY INTEGRITY COMMUNITY

Call us on 0407 945 834

viventeliving.com.au

Disclaimer: The details contained in this house and land package were correct at the time of listing however pricing and land availability is subject to change. All care has been taken to ensure the home design shown is suitable for the advertised lot however design and specification is subject to shire approvals. Photographs, plans and the building component are supplied by the builder and Richard Noble & Company are not responsible for any changes or omissions supplied by the builder. A separate building contract will be entered into with the participating builder. Changes made to the house design will affect the total cost of the package - unless a provisional sum for site works is detailed it is assumed that site works are not included in the package. Site work allowances, where specified, are subject to a licensed survey and engineer reports.