

# House and Land Package



**vivente**

HAMMOND PARK



## The Fernleigh

BED

4

BATH

2

CAR

2

# \$424,190

Lot 18 Prato Vista, Hammond Park

Land Size 375 sqm

House Size 195 sqm

Frontage 12.5 m

Orientation South



**Your House Specialist**

Robert Hillier

0419 926 803

[roberthi@gohomes.com.au](mailto:roberthi@gohomes.com.au)

### Specification Highlights

- Fujitsu reverse air-conditioning
- 31c ceilings to kitchen, living and dining
- 28c to alfresco
- Roller blinds throughout
- Essastone benchtops
- Luxury Smeg appliances
- Price includes BONUS boundary fencing
- Plus a FREE front yard landscaping package

See page 2 for the plan

# RICHARD NOBLE

PROPERTY INTEGRITY COMMUNITY

**Call us on 0407 945 834**

**[vivente.living.com.au](http://vivente.living.com.au)**

# House and Land Package



vivente

HAMMOND PARK

## The Fernleigh

BED

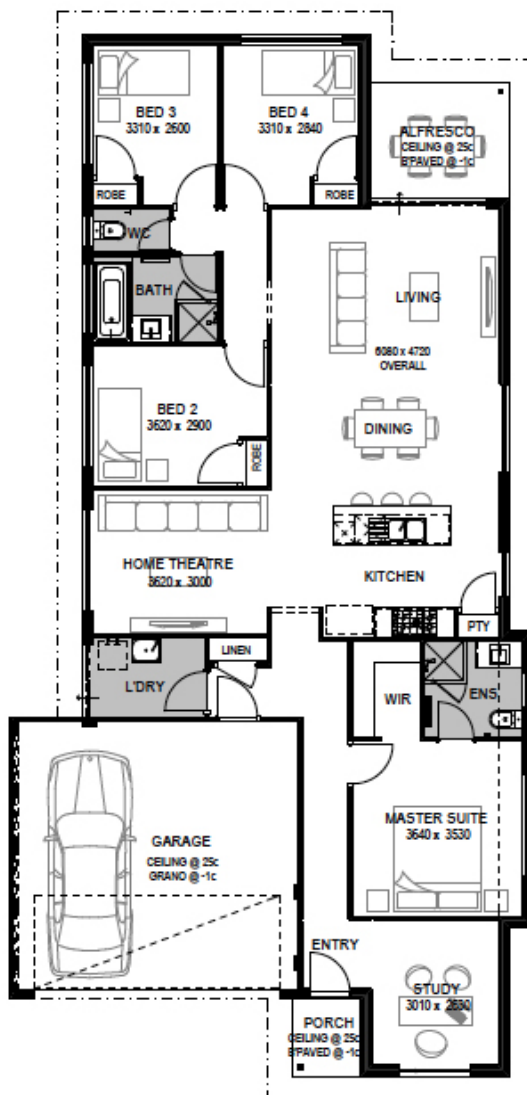
4

BATH

2

CAR

2



# RICHARD NOBLE

PROPERTY INTEGRITY COMMUNITY

Call us on 0407 945 834

[viventeliving.com.au](http://viventeliving.com.au)

Disclaimer: The details contained in this house and land package were correct at the time of listing however pricing and land availability is subject to change. All care has been taken to ensure the home design shown is suitable for the advertised lot however design and specification is subject to shire approvals. Photographs, plans and the building component are supplied by the builder and Richard Noble & Company are not responsible for any changes or omissions supplied by the builder. A separate building contract will be entered into with the participating builder. Changes made to the house design will affect the total cost of the package - unless a provisional sum for site works is detailed it is assumed that site works are not included in the package. Site work allowances, where specified, are subject to a licensed survey and engineer reports.