

# House and Land Package



**vivente**

HAMMOND PARK



## The Vida

BED **4** BATH **2** CAR **2**

**\$505,522**

PERCEPTIONS

Take living to the next level

Lot 11 Prato Vista, Hammond Park

Land Size 375 sqm

House Size 231.42 sqm

Frontage 12.5 m

Orientation South

Price includes provisional site work costs of \$15,350

Your House Specialist

Robert Skipworth

0418 958 959

roberts@perceptions.com.au

### Specification Highlights

- SMEG 900mm wide oven and hotplate
- Essa Stone bench tops throughout
- Caroma Quatro Tapware and clean flush Luna Wall faced toilet suites
- Double brick construction
- Life time structural guarantee
- Quality workmanship and finishes
- Price includes BONUS boundary fencing
- Plus a FREE front yard landscaping package

See page 2 for the plan

**RICHARD NOBLE**

PROPERTY INTEGRITY COMMUNITY

Call us on 0407 945 834

**viventeliving.com.au**

# House and Land Package



vivente

HAMMOND PARK

## The Vida

BED

4

BATH

2

CAR

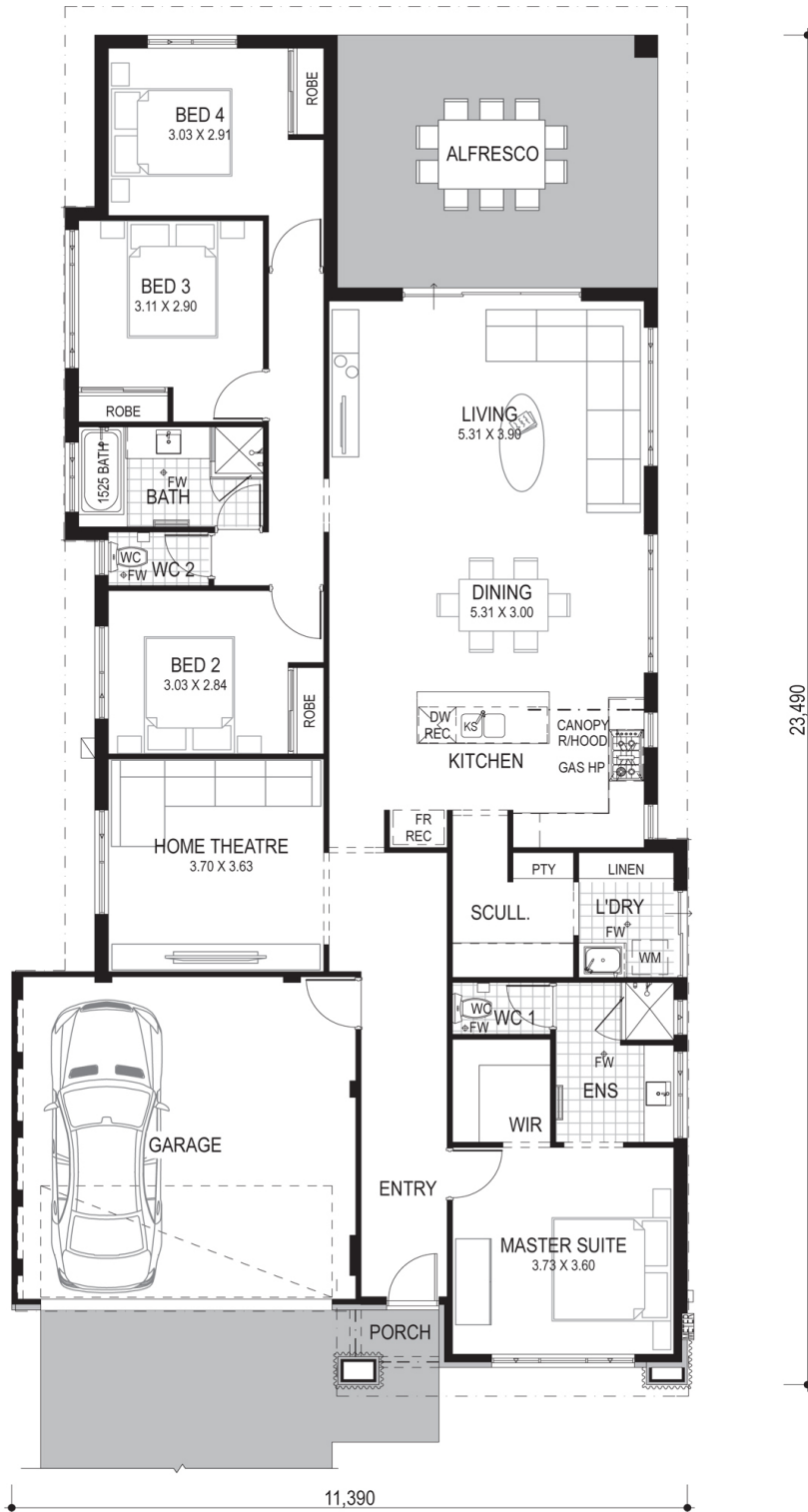
2

Living 172.48 sqm

Alfresco 33.77 sqm

Garage 23.76 sqm

Porch 1.41 sqm



# RICHARD NOBLE

PROPERTY INTEGRITY COMMUNITY

Call us on 0407 945 834

[viventeliving.com.au](http://viventeliving.com.au)

Disclaimer: The details contained in this house and land package were correct at the time of listing however pricing and land availability is subject to change. All care has been taken to ensure the home design shown is suitable for the advertised lot however design and specification is subject to shire approvals. Photographs, plans and the building component are supplied by the builder and Richard Noble & Company are not responsible for any changes or omissions supplied by the builder. A separate building contract will be entered into with the participating builder. Changes made to the house design will affect the total cost of the package - unless a provisional sum for site works is detailed it is assumed that site works are not included in the package. Site work allowances, where specified, are subject to a licensed survey and engineer reports.